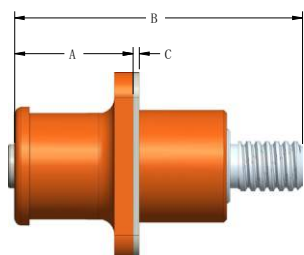


# Product Dimensions

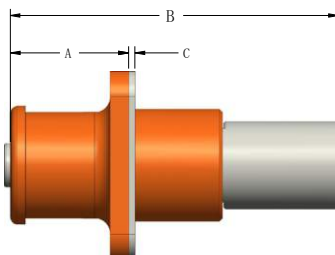
## Contact Termination

### Screw Termination



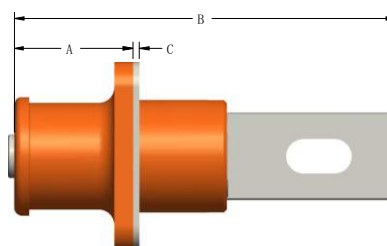
Size	Screw Termination		
	A	B	C
5.7mm	16.5	36.7	1.0
8.0mm	19.0	46.1	1.0
10.3mm	25.8	55.5	0.3

### Crimp Termination



Size	Crimp Termination		
	A	B	C
5.7mm	16.5	40.7	1.0
8.0mm	19.0	52.7	1.0
10.3mm	25.8	50mm <sup>2</sup> : 65.8	0.3
		70mm <sup>2</sup> : 68.8	
		85mm <sup>2</sup> : 71.8	

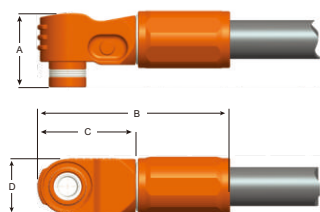
### Busbar Termination



Size	Busbar Termination		
	A	B	C
5.7mm	16.5	46.7	1.0
8.0mm	19.0	61.2	1.0
10.3mm	25.8	68.8	0.3

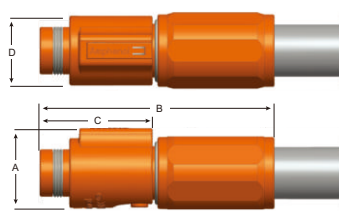
## Shell Type

### Right Angle Plug



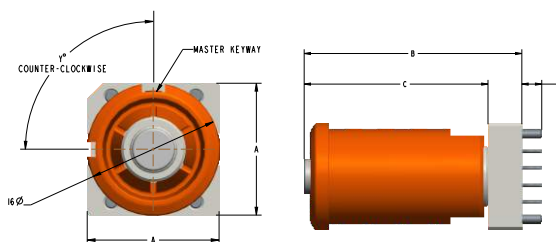
Size	Plug Dimension			
	A	B	C	D
5.7mm	22.6	55.1	30.0	18.0
8.0mm	29.0	74.5	38.4	21.6
10.3mm	41.2	84.5	42.5	28.0

### Straight Plug



Size	Plug Dimension			
	A	B	C	D
8.0mm	24.45	72.4	34.8	21.4

### Straight Receptacle



Size	Press-Fit Termination			
	A	B	C	D
5.7mm	16.0	32.8	27.7	3.0