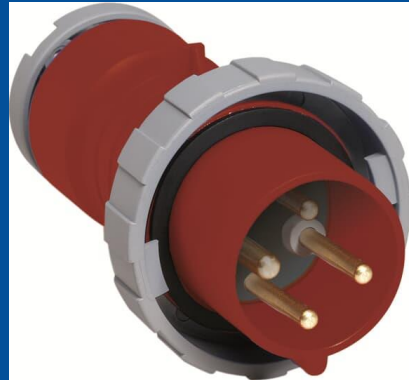


332P3W

# Industrial Plug

## 2CMA166732R1000

Plug, earthing sleeve position 3h, rated current 32A, IP67 watertight, 3-poles+earth, frequency 50-60 Hz, color code red



## GENERAL

<b>Product Name</b>	Industrial Plug
<b>Product ID</b>	2CMA166732R1000
<b>Function</b>	Plug
<b>EAN</b>	7392696667326
<b>Catalog Description</b>	Plug, 3h, 32A, IP67, 3P+E
<b>Country of Origin</b>	Czech Republic (CZ)
<b>E-Number Finland</b>	2406027
<b>E-Number Norway</b>	2416265
<b>E-Number Sweden</b>	E2416265
<b>Standards</b>	IEC 60309-1, -2
<b>RoHS Status</b>	Following EU Directive 2011/65/EU

## TECHNICAL

<b>Product Main Type</b>	TP
<b>Color</b>	Red
<b>Number of Poles</b>	4
<b>Clock Position</b>	3Hour
<b>Rated Current</b>	32 ampere
<b>Rated Voltage</b>	380/440 volt
<b>Frequency</b>	50/60 hertz
<b>Degree of Protection</b>	IP67 IP69
<b>Cable Cross-Section</b>	2.5...6 mm <sup>2</sup>
<b>Housing Material</b>	Thermoplastic (PBT)
<b>Plug Angle</b>	Straight
<b>Product Group</b>	Tough&Safe

## DIMENSIONS

<b>Product Net Width</b>	94 millimetre
<b>Product Net Height</b>	94 millimetre
<b>Product Net Length</b>	147 millimetre
<b>Product Net Depth</b>	147 millimetre
<b>Product Net Weight</b>	0.3 kilogram

## PACKAGING

<b>Package Width</b>	95 millimetre
<b>Package Height</b>	175 millimetre
<b>Package Gross Weight</b>	0.4 kilogram
<b>Package Length</b>	95 millimetre
<b>Package Units</b>	box 1 piece